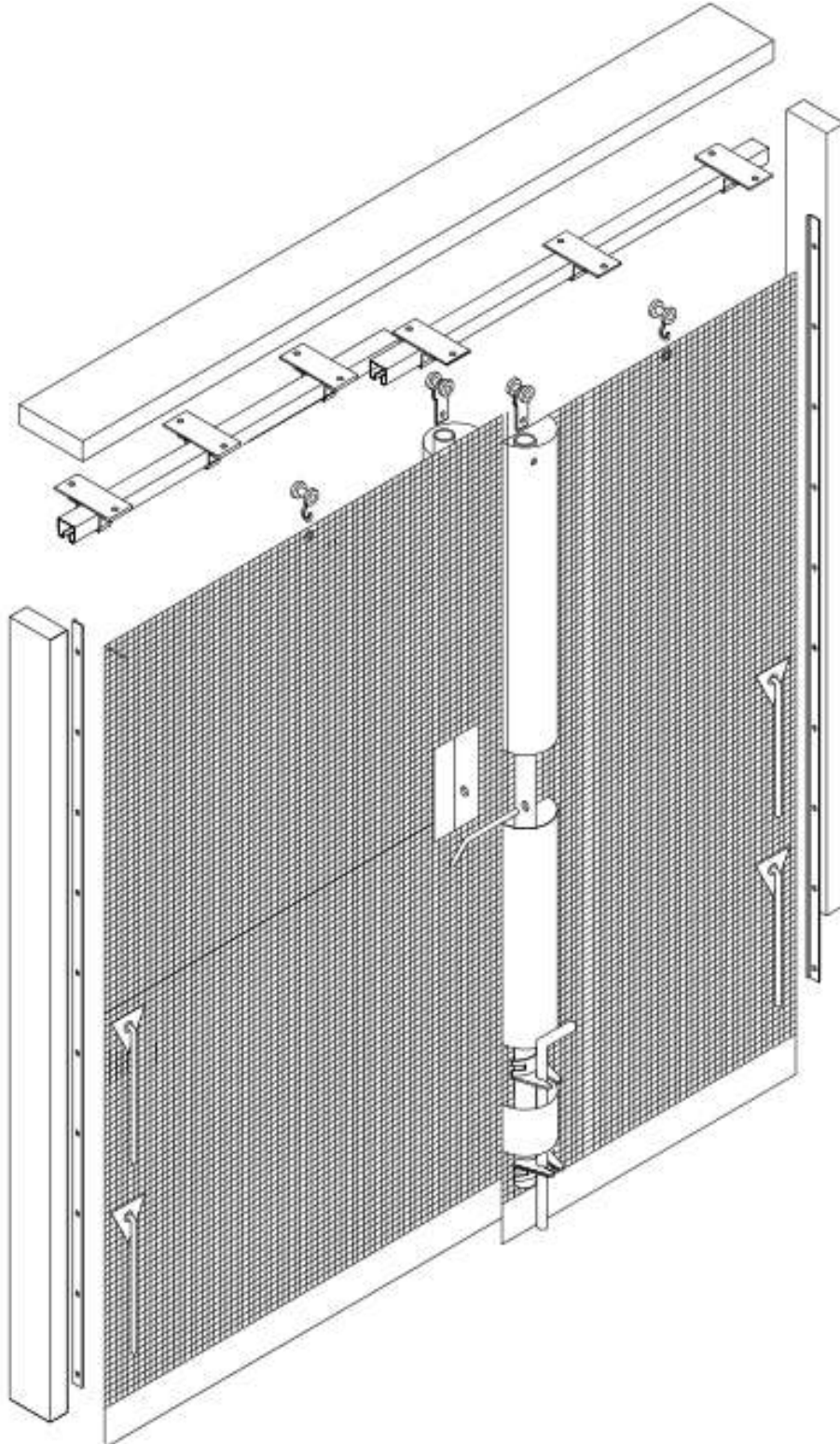




GATEWAY INDUSTRIAL PRODUCTS BI-PARTING SLIDER



Dock Shelters

Dock Seals

Bug Barriers

Wind Curtains

X Tuff Impact Doors

X Tuff Impact Doors

Wind Curtains

Bug Barriers

Dock Seals

Rev. 11/23/12

JS-702

INSTALLATION INSTRUCTIONS BI-PARTING SLIDER – HEADER MOUNT

I. Receiving and Handling

1. Upon receipt of the Gateway product, unpack and inspect contents for shipping damage or missing hardware and if necessary prepare claims against the freight carrier for any damage discovered.

Important Note:

Damage to the package should be noted on the shipping paperwork. Exterior damage may indicate concealed damage. This notation will preserve your rights should a freight claim be necessary.

Note: These doors can be used either from the interior or exterior, this is noted during ordering.

2. Install the lumber. (See Fig.1).

There are three pieces of lumber supplied. Two (2 x 4) install vertically and are equal to the door height minus 1.5 inches. The third (2 x 6) mounts horizontally across the header, mount this piece first in the center of the door jamb. Mount the remaining vertical 2 x 4's so they are centered on the horizontal piece.

3. Install the pipe staff and cane bolt holders. Lay the curtain out on the floor so the pipe staff pockets are facing up. (Note: The LH leading edge pocket will be facing down). The pipe staff pockets will face the side of use, (outside or inside of the building after installation).

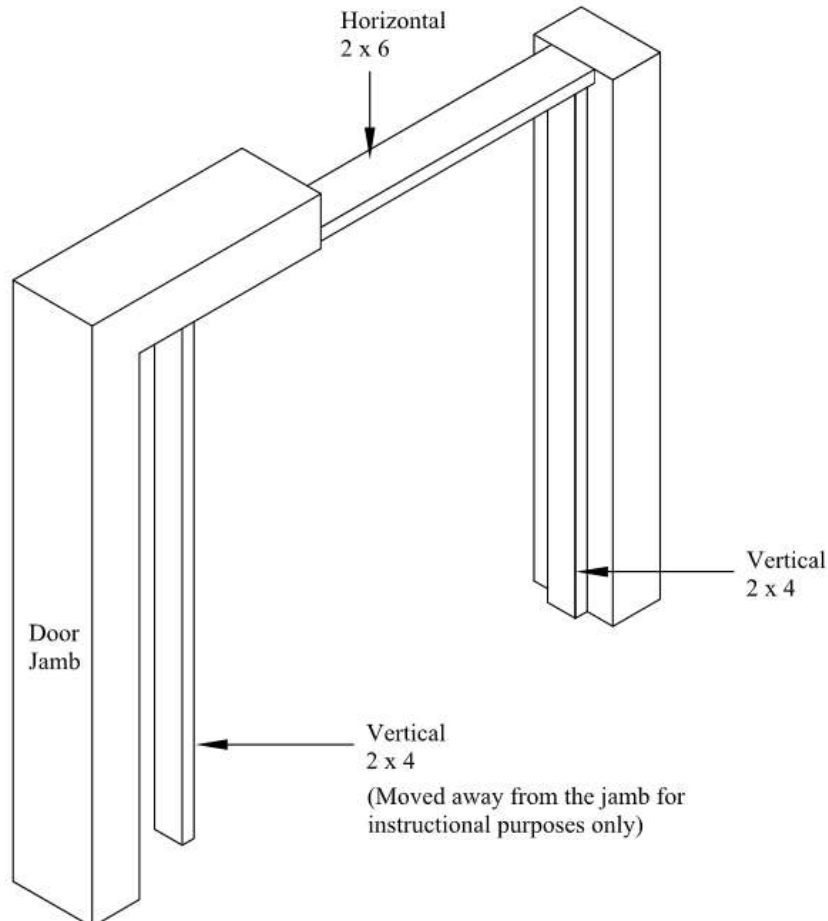


FIGURE 1

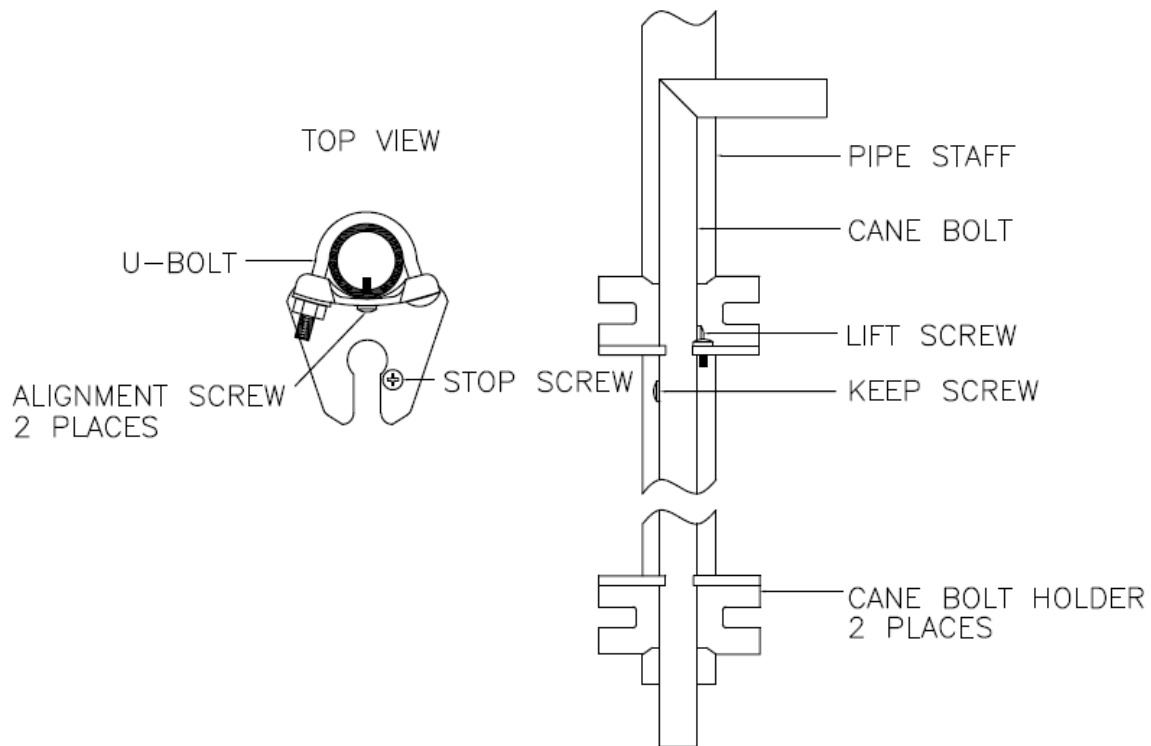


FIGURE 2

The two pipe staffs with the center locking holes approximately 4 or 6 feet up (See Fig. 5) slide into the pockets at the ends of the curtains, these are the leading edges of the doors. One of these pipe staffs has alignment holes marked in red and are used for the cane bolt brackets and is the RH leading edge. The other doesn't and is installed on the LH leading edge. The other pipe staffs will have pre-drilled alignment holes marked in red. They slide into the remaining pockets of the curtain. For curtains with more than two pipe staff, line up the pre-drilled holes on the cane bolt holders with the pre-drilled holes on the pipe staff. Fasten the two cane bolt holders with (2) #10-24 x 1/2 screws to the pipe staffs, (the top cane bolt holder has a stop screw and the bottom does not. (See Fig. 2). Use the U-bolts to secure the brackets to the pipe staff. Remove the keep screw from the cane bolt, slip the cane bolt into the holders and reinstall and tighten keep screw, this locks the cane bolt into the holder.

4. Install the pipe staff trolley. Fasten the pipe staffs to the "trolleys with tabs" by inserting the tabs into the tops of the pipe staffs and lining up the holes in the curtain, pipe staff and trolley tab. Fasten with 5/16" x 2" bolts and nuts provided

5. Install the sliding track. Install the track mounting brackets on areas marked on the track. Mount the track, so that the end of the mounting bracket is flush with the outside edge of the horizontal 2 x 6. Half the track mounting brackets face the interior of the building and the other half of the track mounting brackets will face the exterior of the building so that one side of the screen can bi-pass in front of the other. (See Fig 3 and 4).

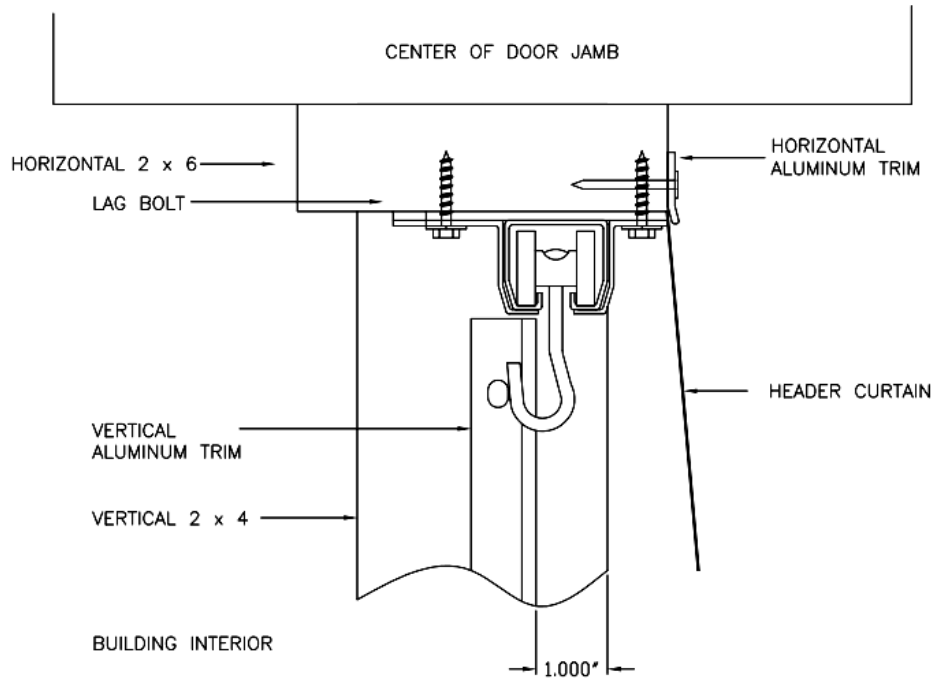


FIGURE 3 (RH SIDE OF THE DOOR)

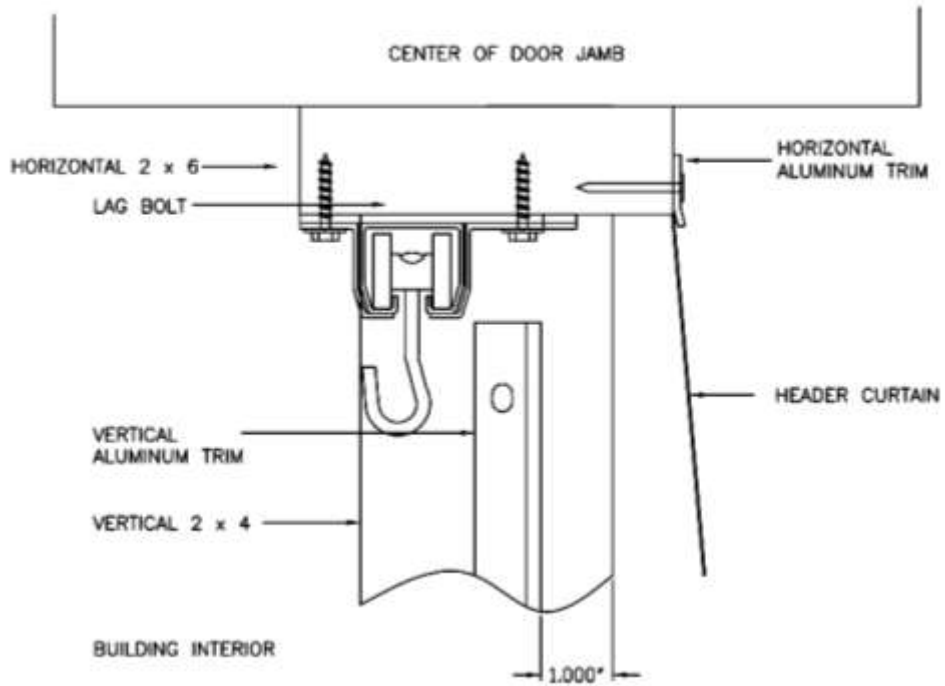


FIGURE 4 (LH SIDE OF THE DOOR)

6. Hang Curtain Assembly. Take the entire curtain half assembly with pipe staffs installed and lean it against the jamb. Do the same for the other half. . Line up each "trolley with hook" with the appropriate grommet hole in the curtains and attach.

7. Pull the RH side of the door past the LH side of the pipe staff and lock the two pipe staff together. (See Fig. 5).

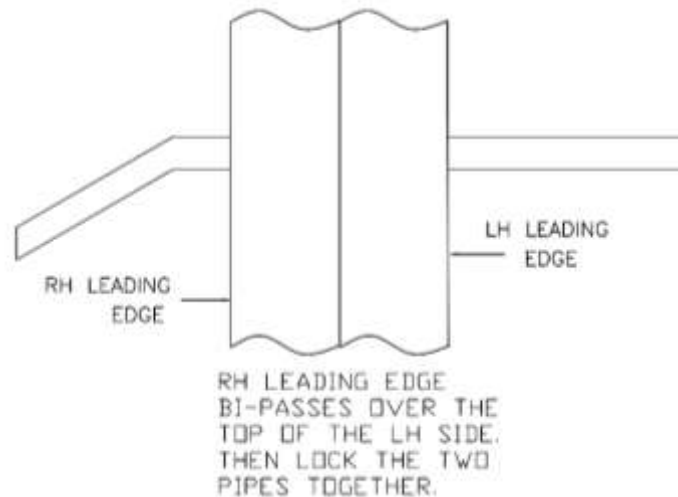


FIGURE 5

8. Line the center cane bolt up and drill a 5/8" hole 2" deep in the floor to accept the cane bolt. Lock the cane bolt into the floor.

9. Pull one half of the curtain back to its vertical 2 x 4. Start at the top of the curtain; pull the curtain snugly to the interior vertical 2 x 4, neatly folding the curtain under if necessary to take up any slack. Put 1 nail at the top, now pull the bottom over and down, snug and nail. In line with the first two nails, put two more in evenly spaced now cover with the aluminum trim and nail every other hole. (See Fig. 3). Repeat Steps 9 & 10 for the other half of the curtain.

10. Nailing every other hole, fasten header curtain along the top of horizontal 2 x 6 with clamp strip and roofing nails. The Gateway Logo should face building exterior. (See Fig. 3).

As you are looking at the door pull the RH side of the screen past the left hand side and lock the two pipes together using the locking pin.

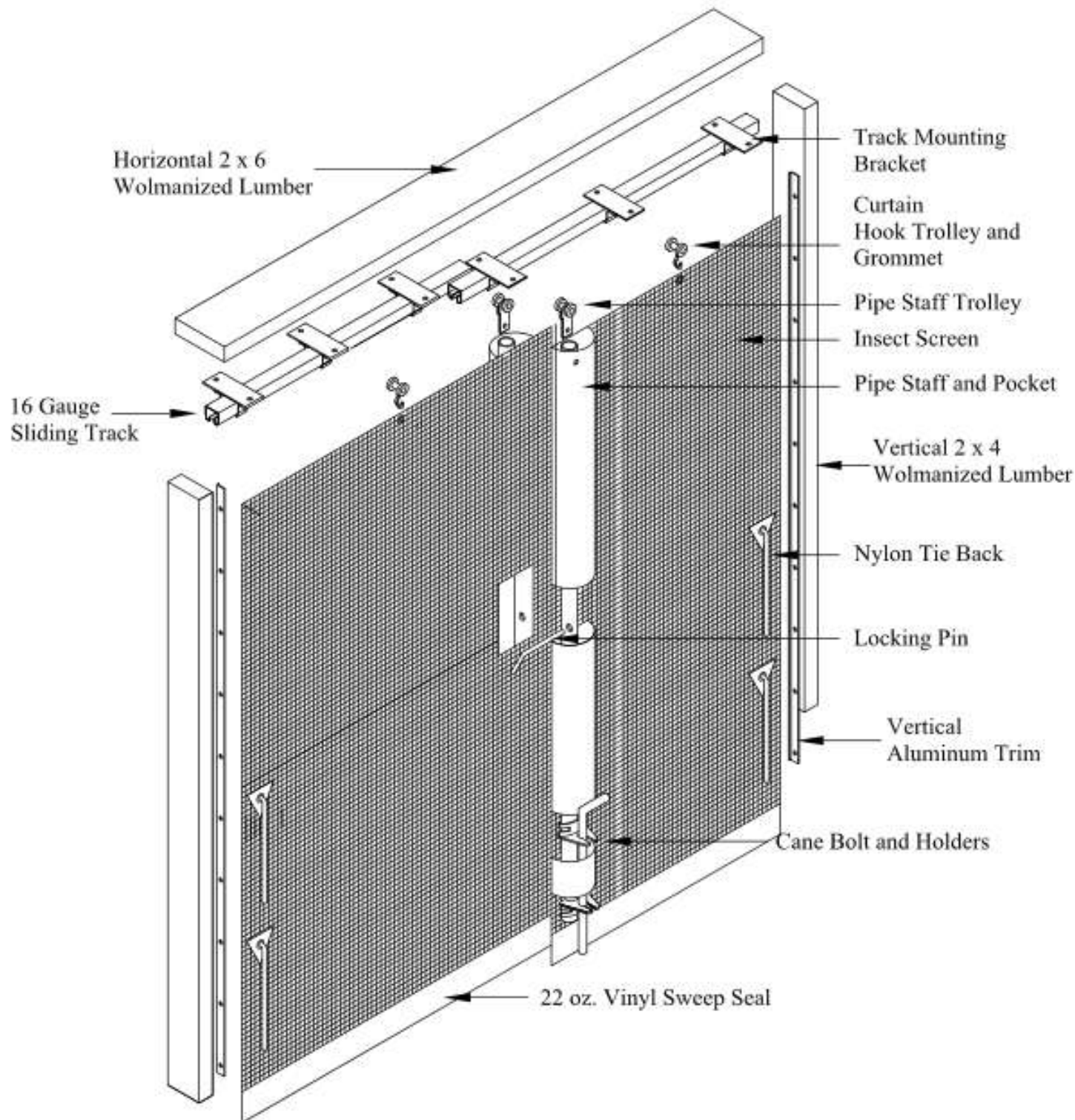


FIGURE 6