



GATEWAY INDUSTRIAL PRODUCTS, INC

# VINYL ROLL UP DOOR



*Helps maintain an energy efficient workspace in your facility, reduces heat loss, and can be used to create room dividers.*



- > Helps Conserve Energy and Control Temperature
- > Ideal for Pharmaceutical, Food Processing, Packaging and Manufacturing Facilities
- > Allows Easy Access for All Types of Traffic
- > Economical Alternative to a High Speed Door
- > Easily Installed on Dock Doors and Warehouse Openings Inside and Out
- > Doors Available for Openings up to 25' Wide x 20' High

## OVERVIEW

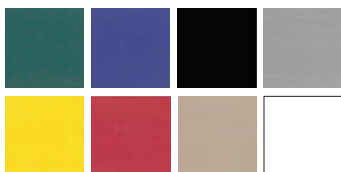
Helps maintain a comfortable working environment in your facility by keeping hot or cold air in, and can also aid in the control of dust and noise. The Vinyl Roll Up Door is built to customer specifications featuring: 22 or 40 ounce vinyl, optional vision panel, and an automatic reset system.

### CURTAIN OPTIONS:

#### VINYL

Aids in controlling dust and temperature.

**Standard Colors:** Green, Blue, Black, Yellow



\*Custom Colors are available with an up charge.

**Standard Vinyl:** 22 Ounce

OPTIONAL: 40 Ounce Premium

Puncture resistant up to 225 lbs

Low temperature resistant to -40 F

### STABILIZATION:

**Fiberglass Windbars** standard on doors up to 16' W. Flexible extrusion allows doors to pop out of tracks on impact, protecting curtain from damage.

**Anodized Aluminum Hinges** are available for motorized doors in higher wind areas and larger sizes. Includes replaceable curtain panels.

### TRACKS:

**Snaptite aluminum tracks** available in 2", 4", & 6" depths allow for easy replacement.

**Vinyl weatherstripping** is angled inside tracks to provide a tighter seal.

Optional 1.5", 3", and 6" Brush Seal available.

### RESET/BREAKWAY SYSTEM:

**Interlocking Brush Clips** at top of 2" and 4" Tracks automatically resets curtain back into guide tracks in the event of accidental impact or blow out.

Optional Aluminum Bottom Profile includes Breakaway Tabs designed to snap on impact, protecting the curtain and stabilizers from damage.

Bottom profile is standard on door doors with aluminum hinges and high cycle doors.

### MOUNTING OPTIONS:

#### HEADER MOUNT

Mounts in between jambs under the header.

#### WALL MOUNT

Mounts directly to wall, can be mounted on interior or exterior.

#### STAND OFF/E-TRACK MOUNT

Mounts in front of existing sectional or rolling steel door. Allows operation of both doors simultaneously without interference of each other.

### SPECIAL APPLICATIONS:

#### BLACKOUT DOORS



#### GREENHOUSE DOORS



**LOW TO MEDIUM TRAFFIC:**

Our low to medium traffic vinyl roll up door options can be manually operated or motorized. Motorized options utilize operators running from 8"-12" per second making them a great addition for warehouse for openings with medium traffic flow.

**MANUAL SPRING LOADED**

Manual pull down operation with a heavy duty spring loaded roll tube.

Includes locking pin or slide lock to secure door in down position.

**CHAIN HOIST**

Spring assisted Chain Hoist option for openings up to 16'W x 16'H.

Doors larger than 14' are equipped with friction brake.

**FIXED, TEMPORARY, OR STATIONARY VINYL PANELS**

Vinyl Panels include 2" Vinyl Hem on all sides and can be ordered to suit each individual job.

**Options Include:** grommets in corners and/or around perimeter, magnets sewn into hems, keder rail attachments, aluminum flatstock sewn into hems.

**AUTOMATIC**

In-Tube motor includes 8' cable and comes with constant contact rocker switch.

- > Runs 12" per second/ 25 cycles per day
- > Fiberglass wind bars or aluminum hinge option available for high wind areas

**Accessories:** Receivers, Remote Controls, Pullcords, N4 Control Station & Roll Tube Cover and more.

**MD50**

Jackshaft operator includes Nema1 photo-eyes, O/C/S station, built-in receiver & auto timer to close.

- > Available for 50 cycles per day
- > Direct drive, RHD only, runs 8"-9" per second
- > Chain & Sprocket, 12" per second
- > Bottom bumper standard

**Accessories:** Remote Controls, Motion Sensors, Pullcords, Operator Cover and more.

**HIGH TRAFFIC:**

High Cycle Roll Up Vinyl Doors operated by one of 3 exclusive jackshaft operators are a great alternative to costly high speed vinyl doors. The door curtain is available with fiberglass windbars or aluminum hinges (hinges required over 16'W) and comes standard with an aluminum bottle profile. Aluminum hinge option includes replaceable panels. A great option for high traffic areas.

**HC20**

Includes High Cycle jackshaft operator with O/C/S station, built-in receiver, auto-timer to close, N4 photo-eyes, and emergency chain hoist

- > Runs up to 20" per second/ 100 cycles per day
- > NOTE: Larger sizes may require 1.0HP operator (Runs 18" per second)

**HC30**

Includes High Speed High Cycle (Soft-Start/Soft-Stop) operator with O/C/S station, built-in receiver, auto-timer to close, N4 photo-eyes, and emergency hoist

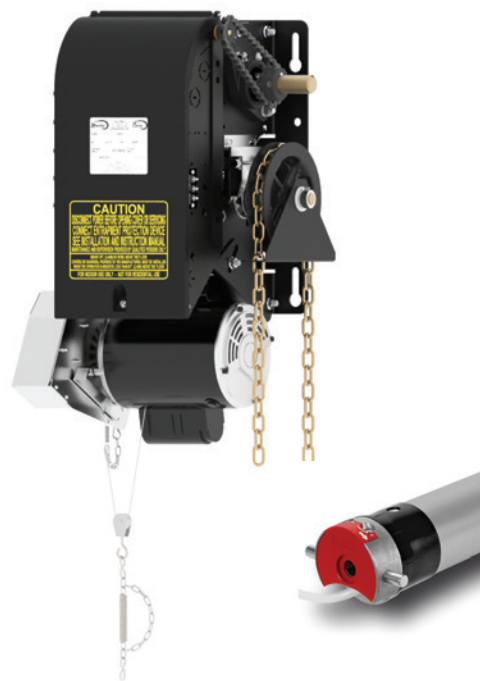
- > Runs 30" per second (17" to close) / 500 cycles per day
- > Must use chain and sprocket

**HCXL (18'W – UP TO 25' W)**

Includes High Cycle Gearhead operator with O/C/S station, built-in receiver, auto-timer to close, N4 photo-eyes, and emergency hoist

- > Runs 12" per second / 80 cycles per day
- > Door includes 4.5" steel roll tube, 6" deep flanged tracks, aluminum hinges standard.
- > Wind loads should not exceed 10-20 MPH.

**High Cycle Accessories:** Remote Control, Motion Sensors, Pullcords, Operator Covers, Roll Tube Covers & Reversing Safety Edge, Floor Loops & Detectors, Keypads







Wall Mount HC20



Automatic E-Track (Side View)



Fixed Vinyl Panel

GATEWAY INDUSTRIAL PRODUCTS, INC

# VINYL ROLL UP DOOR



For more information visit [www.gatewayindustrial.com](http://www.gatewayindustrial.com) or call **1-800-701-4782**

Gateway Industrial Products Inc. • 440.324.4112 • Fax 1.800.525.3427 • PO Box 95 Elyria, OH 44036