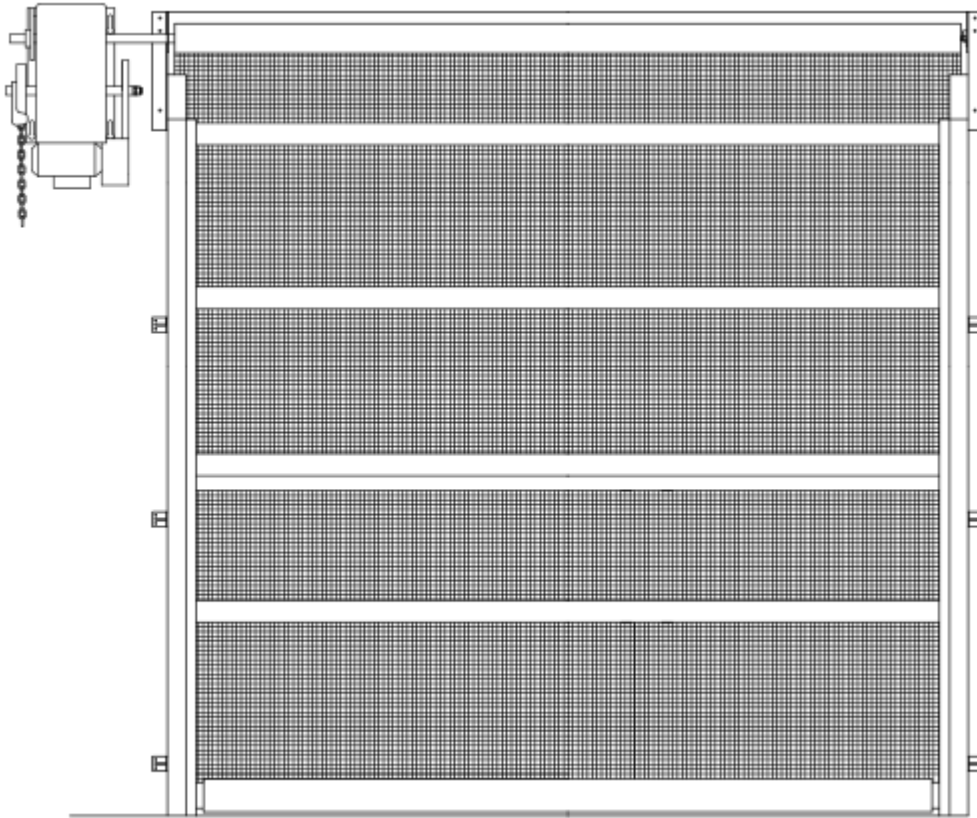




**GATEWAY  
HIGH CYCLE ROLL-UP BUG BARRIER  
OVERHEAD DOOR STANDOFF DESIGN**



	<b>WIDTH</b>	<b>HEIGHT</b>
<b>Door Opening Size</b>		
<b>Out to Out Finished Size</b>		

## INSTALLATION INSTRUCTIONS

### I. Receiving and Handling

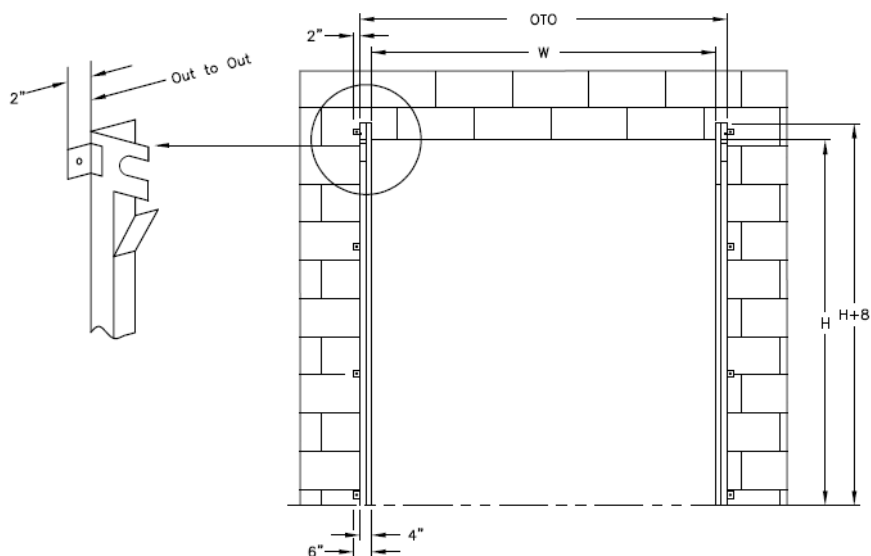
1. Upon receipt of the Gateway Bug Barrier®, inspect the contents for shipping damage or missing hardware. If necessary initiate claim(s) with the freight carrier for any damage.

### Important Note:

Any damage to the crate or packaging material should be noted on the shipping paperwork. Exterior damage may indicate concealed damage. This notation will preserve your rights should a freight claim be necessary.

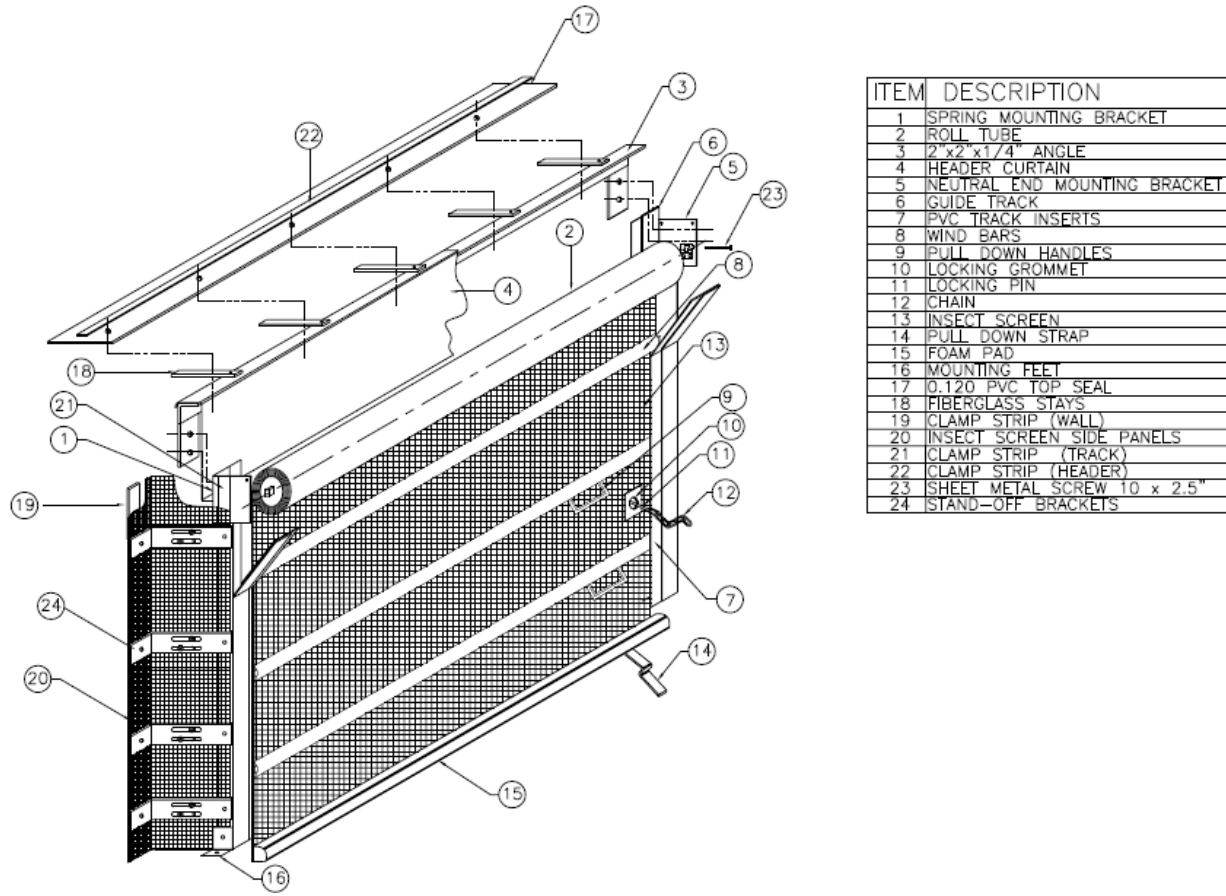
### II. Hardware Mounting Instructions

2. Dimension W and H is the width and height of the door opening as ordered.
3. Check that the door opening width and height of the door is correct. (See front page). Mark the center of the door opening. Measure  $\frac{1}{2}$  of the OTO + 2 inches (see front page) from the center line and mark the wall on both sides for placement of the stand-off brackets. (See Fig 1.)
4. The side screen panels need to be mounted to the side of each track assembly, securing with the bolts and nuts provided in the pre-drilled holes.
5. Unroll side screens which have two aluminum clamping strips one is marked track, this goes at the top of the track. Insert bolt into track against PVC liner if used, then through the screen and aluminum clamp strip then the stand-off brackets. The tracks each have a minimum of four stand-off brackets and one screen panel. This instruction depicts a left hand motor mount. A right hand will be reversed. Locate the track assembly with the football bearing. (Remove the bearing and place it on the jackshaft with the bearing facing away from the roll).



**FIGURE 1**

6. Next install the top angle to the back of the track assemblies with the horizontal leg of the angle facing the building interior and against the tops of the track assemblies. Use the 1/4-20 x 1" machine screws provided to secure the angle to the track assemblies. The round head of the machine screw with a 3/16 washer must be against the PVC liner inside the track assembly. (See Fig. 2)



**FIGURE 2**

7. Rotate the stand-offs so that they are in position to be mounted to the wall.

8. Ensure that track and header angle assembly are centered on the door way opening. Lift into place and line up end of SOB with OTO + 2 inches mark on the wall as measured in step 3. Sandwich the clamp strip with screen in between the wall and the stand-off bracket. Fasten to wall with proper fasteners. (Not provided).

9. With the track assembly in place level square and parallel fasten feet at the bottom of the track to the floor with proper fasteners. (Not provided). NOTE: 4" Track have use 4 feet.

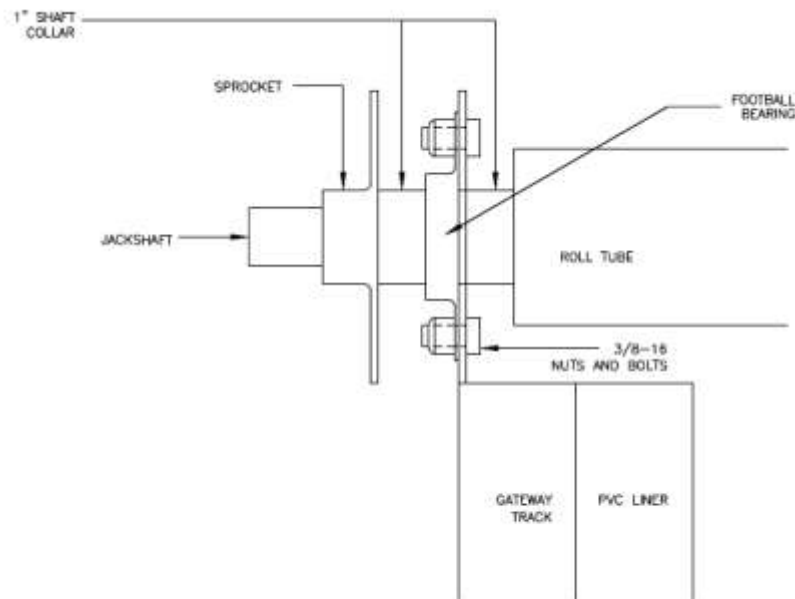
10. The horizontal top section consists of a 2"x2"x 1/4" angle, header curtain, fiberglass stays and 1/8" PVC strip.

11. The header curtain attaches to the top of the horizontal angle and hangs over the front of the angle, but behind the tube, with the logo facing the building exterior. The stays fit over the

header curtain and the PVC material is on top and points out over the back of the tracks. Put aluminum clamp strip on top and fasten all the above items through the pre-drilled holes in the horizontal angle using the 1/4-20 x 1 long machine screws and nylon lock nuts provided. Trim the PVC and stays to fit around the overhead dock door as needed. The PVC should be trimmed as close as possible to the dock door for a proper seal.

### **III. Insect Screen Roll Mounting Instructions**

12. Ensure that the insect screen is wrapped tightly onto the roll tube. Do not remove the stretch wrap at this time.
13. Put the idler end of the roll tube assembly into the idler bracket on the right hand side, then slide the jackshaft with the collar into the slot on the other bracket on the left.
14. Fasten the bearing on the slotted plate with the 3/8 x 1/2 bolts and nylock nuts. Slide the shaft collar up against the inside of the bearing and tighten to hold the roll in place. (See Fig. 2).
15. Slide another collar on the other side of the bearing and tighten.
16. Slide the sprockets on the jackshaft and the motor shaft to help with the placement of the motor.
17. Mount the motor on the wall or structure that will safely support it.
18. Place the motor as close to the sprocket as possible, you are limited by the length of chain.
19. Once installed and the door is lowered, install the 10 X 2.5 screw in the idler end bracket to lock it in.



**FIGURE 3**